



THE WORLD LEADER IN COMPACT MATERIALS HANDLING SOLUTIONS

# POWERHANDLERS FOR THE PAPER INDUSTRIES

## BATTERY-POWERED H-Series

PowerHandling's battery-operated **H-SERIES** represents a major technological advance in compact, high torque, roll moving devices. Designed specifically for paper rolling applications it allows a single operator to safely, quickly & easily move paper rolls in excess of 12 tons (27,000lbs).

The H-Series represents a major break-through in roll moving technology, combining such features as i) more torque than any other PowerHandling Model, ii) higher-capacity battery packs now located in the unit's base and iii) a wider yet lower drive roll for better grip and less damage to paper rolls. However the biggest feature of the H-Series is its sophisticated custom-designed controller module that continuously measures both power and temperature, cooling the motor accordingly and regulating the H-Series' performance to ensure it is protected from over-loading or misuse.



PowerHandling's Patented Direct-Drive Design houses the Motor-Gearbox "inside" the Drive Roller, improving reliability, reducing overall size and eliminating any drive-related maintenance

Ergonomically Angled Variable Speed Throttle with Forward and Reverse



Features a Quick-Release Telescoping Handle Shaft to Adjust Handle Height to Match the height of each Operator



### H40S & H50S

The H-Series features a heavy-duty handle shaft coupling rotating in an industrial strength bronze-bushed housing in the rear axle

Heavy-Duty, All-Welded and Chrome-Plated Steel Chassis

Extra Large Rear Wheels For Easier Maneuvering



PowerHandling's high capacity 36V battery packs provide not only exceptional torque but also long run times.



Other Accessories include Mobile Roll Turntables and Safety Stop Chocks

PowerHandling offers a broad range of roll moving solutions making PowerHandlers the most compact, powerful & easy-to-use machines of their type in the world.



ARDOB GmbH

Tel. IT: 0039-02-40047229

e-mail: info@ardob.com

Tel. CH: 0041-41-5342814

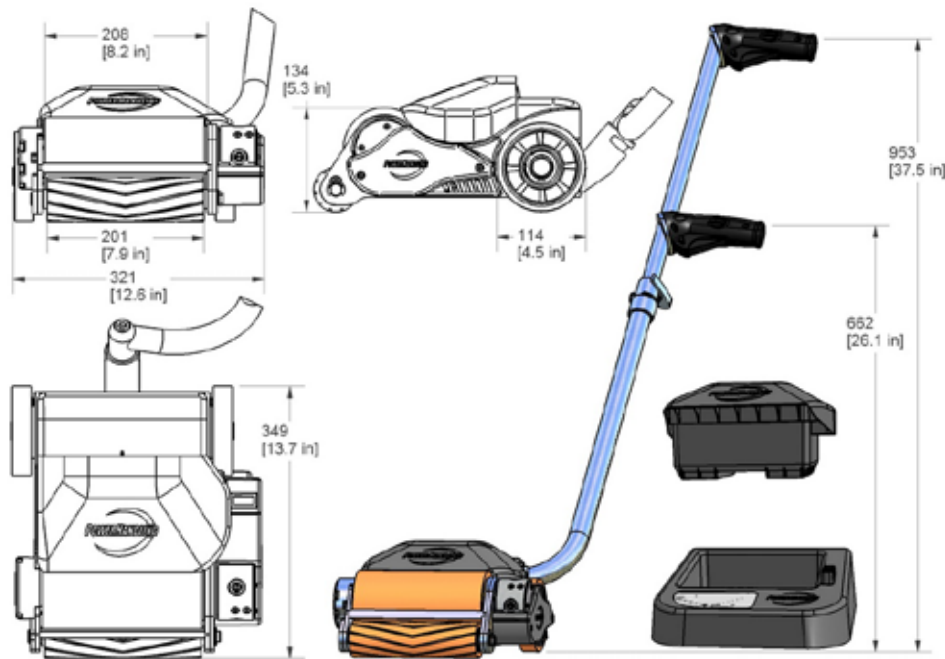
www.ardob.com



**THE WORLD LEADER IN COMPACT MATERIAL HANDLING SOLUTIONS**

## **POWERHANDLER - H40S & H50S**

- Battery-operated, 36V, rated for medium/high-duty-cycle (short rest periods) and high load applications.
- Features PowerHandling's patented Direct-Drive (motor enclosed inside the drive roller) design using a fan-cooled and sealed electric motor with heavy duty three-stage planetary gearbox.
- Sophisticated controller module featuring multi-criteria protection of motor with:
  - i) Motor temperature monitoring for fan control and overt-temp (cut-off) protection
  - ii) Peak & average amperage monitoring for battery and motor stall protection
  - iii) Voltage monitoring and digital display (to prevent under-voltage and protect battery life)
  - iv) On-machine LED error reporting with explanation of error cause and solution
- Incorporates a heavy-duty, all-welded, reinforced and chrome-plated main chassis (not bolt-together) that features large diameter (115mm/4.5") rear wheels for faster and easier maneuvering.
- A 'battery-in-base' design results in a lighter handle assembly providing the operator an effortless swivel action. The H-Series still retains the swiveling "S" handle design to allow "separating" of rolls but does not have the pivoting rear axle of the B-Series for "pulling" rolls/reels back toward the operator.



BATTERY MODELS	Estimated Maximum Load			Speed Unloaded	Duty-Cycle Capability	Fan-Cooled / Overload Protection	Battery Voltage	Recharge Time
	Cable, Flat	Paper, Flat	Paper, Lift					
	Metric Tonnes (Pounds)			m/min (ft/min)	(Low-High)	(Volts)	(Minutes)	
E20S	6.2 (13,600)	3.3 (7,200)	0	21 (69)	Med-High	Yes/No	36 NiCad	30-45
B30S	11.0 (24,250)	5.8 (12,750)	3.0 (6,600)	16 (52)	Low	No/No	36 NiCad	30-45
B35S	13.0 (28,500)	7.0 (15,400)	4.0 (8,800)	12 (39)	Low	No/No	36 NiCad	30-45
B40S	15.7 (34,600)	8.3 (18,200)	5.9 (13,000)	19 (62)	Low	No/Yes	48 NiCad	45-60
B50S	18.5 (40,700)	9.7 (21,300)	7.0 (15,400)	15 (49)	Low	No/Yes	48 NiCad	45-60
H40S	20.0 (44,000)	10.5 (23,100)	7.5 (16,500)	17 (55)	Med-High	Yes/Yes	36 SLA	120-180
H50S	23.5 (51,700)	12.4 (27,300)	8.8 (19,400)	13 (42)	Med-High	Yes/Yes	36 SLA	120-180

PowerHandling Inc. endeavors to ensure all information provided in this Data Sheet is correct at the time of its publication. However it takes no responsibility for the accuracy, currency, reliability or correctness of the information provided. Note that all load weights in the above table are estimates and meant as a guide only. Each application should be tested to confirm performance.